

A L T E A

 ADRIA

ADRIA





Inspiring your adventures.

OUR VISION IS FOR ADRIA TO
BECOME THE MOST DESIRABLE
RECREATIONAL VEHICLE BRAND.

ADRIA MOBIL HAS BEEN DESIGNING
AND MANUFACTURING CARAVANS
SINCE 1965, WITH OVER A HALF
A CENTURY OF EXPERTISE AND
PASSION APPLIED TO EVERY
VEHICLE.

ADRIA IS RECOGNISED BY
INDEPENDENT AWARDS FOR
DESIGN, INNOVATION, QUALITY AND
CUSTOMER SATISFACTION AND

OUR AIM IS TO INSPIRE YOU TO JOIN
THE EVER-GROWING COMMUNITY OF
ADRIA OWNERS, CREATING YOUR OWN
MEMORABLE EXPERIENCES.

We design and develop our leisure
vehicles by following these principles:

DESIGN

We aim to inspire with vehicles
designed for living, with great style,
practical use of space, comfort and a
feeling of well-being.

INNOVATION

We are committed to innovation, with
vehicles *designed to perform*, with
everything developed for your comfort
and enjoyment.

EXPERIENCE

Our vehicles are *designed for you*, with
a choice of models, layouts, features
and a selection of soft furnishings.

Adria. Inspiration for your adventures.



A L T E A

THE NEW GENERATION ALTEA. OUR BEST-SELLING RANGE OF
MODERN, LIGHTWEIGHT AND CONTEMPORARY CARAVANS, DESIGNED
FOR LIGHTER, BRIGHTER LIVING.

CARAVANS, WITH LIGHT AND BRIGHT HOME-STYLE INTERIORS FOR
EASY-LIVING, MAXIMUM COMFORT AND PRACTICAL USE OF SPACE.

Designed for lighter, brighter living.

A man and a woman are sitting on a light blue tufted sofa inside a motorhome, facing each other at a small white table. They are eating and talking. The motorhome has large windows with patterned curtains and a skylight on the roof. The interior is bright and airy. The man is wearing a dark blue t-shirt and green shorts, and the woman is wearing a pink t-shirt and a patterned skirt. On the table, there are some food items and a glass. To the right, there is a kitchen counter with a white countertop and a yellow cloth. The overall atmosphere is relaxed and comfortable.

Experience
with all your senses.

DESIGNED FOR LIVING

DESIGNED FOR LIVING

Our caravans are carefully designed to give you a great experience when away from home, with spacious, practical and comfortable interiors.

Altea has a **home-style feeling**, with modern stylish interior and a light and bright, welcoming ambiance.

- | LIGHTWEIGHT AND ROBUST STYLISH FURNITURE
- | SYMALITE® WALL LININGS FOR A MORE COSY FEELING
- | ADJUSTABLE TEMPERATURE CONTROL WITH TRUMA HEATING
- | ORGANISED STORAGE THROUGHOUT







DESIGNED FOR LIVING

Experience the **contemporary living spaces**.

The elegant **living room** offers open plan living, with a comfortable dinette, a light-weight put-away table and easy additional bed set up.

- | **LARGE FRONT AND SIDE WINDOWS** TO MAXIMISE NATURAL LIGHT
- | DINETTE WITH **COMFORTABLE SEATING** AND STORAGE
- | **FLEXIBLE DINETTE** WITH A FOLD AWAY TABLE
- | **INNOVATIVE STORAGE** SOLUTIONS

All UK caravans come with an additional kitchen worktop extension (excluding Action).

DESIGNED FOR LIVING

Fully equipped and practical **kitchen** with durable worktop, hob and sink design, oven/grill, microwave, elegant concave cupboards, large capacity drawers and high-quality appliances.

Everything is in the right place for food and drink preparation and for entertaining.

- | PLENTY OF STORAGE DRAWERS AND CUPBOARDS
- | PLENTY OF STORAGE AND INTEGRATED SINK
- | ORGANISED WORKSPACE AND STORAGE
- | HIGH-QUALITY APPLIANCES

GADRIA ALTEA



All UK caravans come with an additional kitchen worktop extension (excluding Action).



Comfortable **bedroom** options for a great night's sleep, featuring easy to access beds and premium quality mattresses.

Controllable lighting and storage for personal things.



- | PREMIUM QUALITY MATTRESSES
- | MULTIFUNCTIONAL RAIL WITH FELT POCKETS AND SHELVES
- | TWIN BEDS, SINGLE BEDS AND BUNK BEDS
- | OPTIONAL PET BED (DOGGY MAT)



Daily rituals are a pleasure, with a well-lit and ventilated bathroom, designed for space and comfort.

Our **bathroom** design, maximises the space, featuring a shower, toilet and wash basin, with good lighting, mirror and storage.

- | INNOVATIVE STORAGE FOR PERSONAL THINGS
- | EFFICIENT DRAINING AND SERVICE ACCESS
- | ELEGANT LIGHTING FOR A RELAXING ATMOSPHERE



Inspired solutions throughout for a more comfortable and organised living space.

Be comfortable, be in control.

LIGHTING

Versatile lighting, includes LED, spot lights and ambient lights.

PREMIUM QUALITY MATTRESSES

featuring Tencel® covers, provide great support with high-resistance foam construction, easy-care fabrics and natural protection against odours, bacteria and static.

ORGANISATION

Plenty of innovative storage solutions in all living spaces.

SEATING

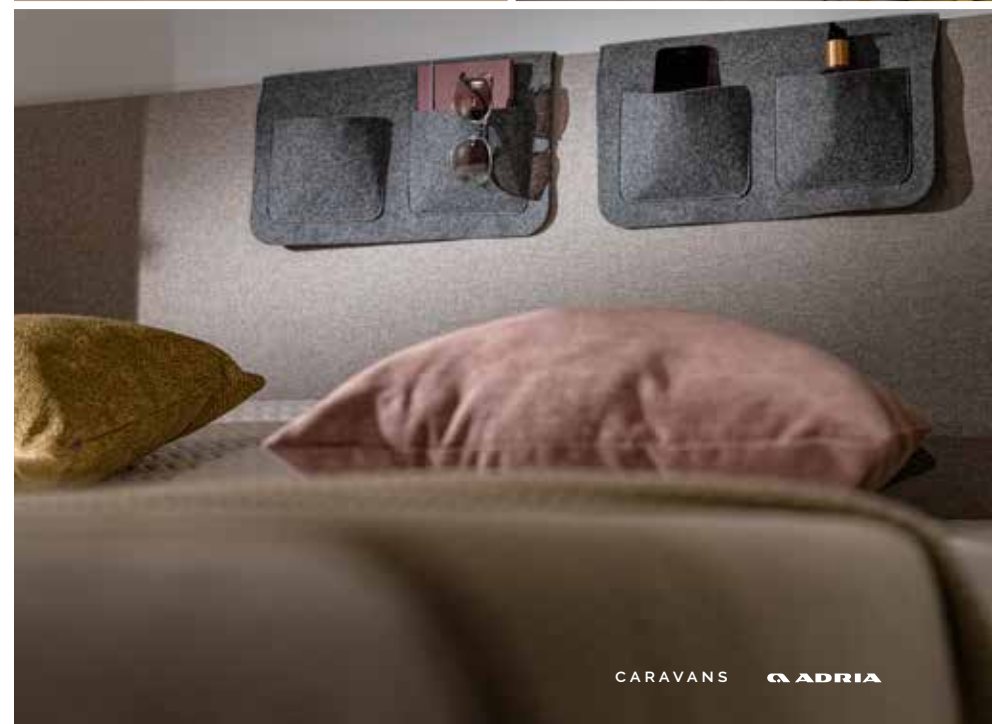
Relax with comfortable and supportive seating.

PET FRIENDLY

Stable Door and optional doggy bed.

MEDIA

Advanced easy-to-use digital control panel and a range of multimedia solutions including TV point and holder and multiple USB ports.



Performance and
comfort all year round.

DESIGNED TO PERFORM



DESIGNED TO PERFORM

Inspired design vehicles for carefree enjoyment, practicality and comfort, Adria leads the way in caravan design.

Featuring aerodynamic profile and **Adria signature features**, for easier and more efficient towing.

- | **NEW GENERATION EXTERIOR** WITH AERODYNAMIC, ELEGANT DESIGN
- | **NEW CONSTRUCTION** FEATURING SYMALITE® AND SOLID THERMOPLASTIC PANELS
- | **LARGE FRONT AND SIDE WINDOWS** MAXIMISING NATURAL LIGHT
- | **REAR WALL DESIGN** WITH MULTIFUNCTIONAL LED LIGHTS
- | **PERFORMANCE CHASSIS** BY AL-KO

- | **SMOOTH GRP BODY** WITH DENT RESISTANCE
- | **GRAB HANDLES** FOR EASY MANOEUVRING
- | **AWNING LIGHT**
- | **INTEGRATED AWNING PROFILE** FOR OUTDOOR LIVING
- | **ADRIA ALLOY WHEELS**



Your style,
your choice.

DETAILS MAKE THE DIFFERENCE

A selection of **high-quality upholstery**
and **cushion sets** to compliment the
style and your personal taste.

UPHOLSTERY



SELENA

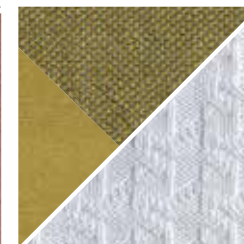


AMBER

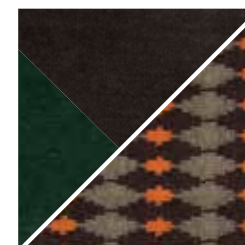
CUSHIONS



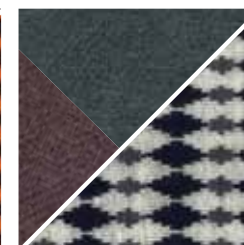
DREAM HARMONY



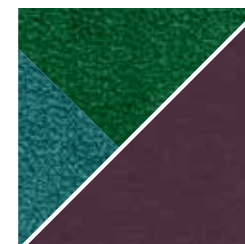
SUMMER VIBES



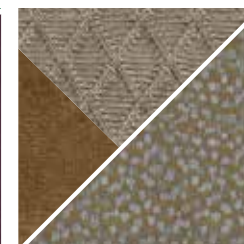
BROWNIES



GREY PLANET



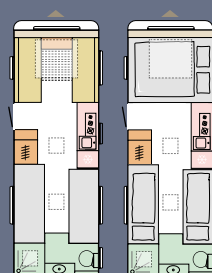
MYSTIC GARDEN



WARM BROWNS

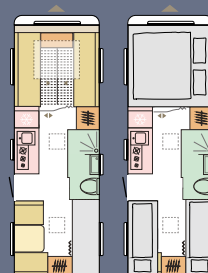
Layouts

Available in a choice of layouts, there is sure to be one to suit you.



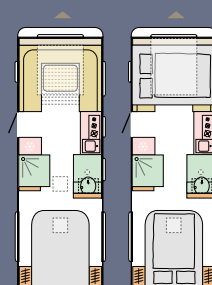
TYNE

L	8248 mm
W	2299 mm
B	4



AVON

L	8288 mm
W	2299 mm
B	6



DART

L	8260 mm
W	2299 mm
B	4



L = Length | W = Width | B = Berths

Construction

Robust **body construction** and chassis integration for safer handling and optimum weight management, with **AL-KO and Knott** as our chassis partners (model and layout dependent). The combined solution of durable GFK body and performance chassis means reliable long-term performance.

With the clean lines and inspired solutions based on aerodynamic principles of our new generation caravans, experience improved air-flow and lower resistance when towing, for more efficiency.

Exclusively on Alpina caravans, Adria's unique **Complex body construction** combines the torsional strength of wood, the durability of polyurethane and the moisture-stopping properties of polyester giving reliable long-term durability and performance.



01 COMPOSITE WOOD PANEL

02 POLYURETHANE SEALANT

03 EPS STYROFOAM

04 DENT RESISTANT POLYESTER
BODY SHELL

05 REINFORCED HARDWOOD PROFILE

06 XPS STYROFOAM INSULATION FOAM

Climate-control

Built to **Adria Thermo-build** standards with advanced insulation materials and precision-engineered air-flow system to guarantee your comfort. Tested in our own climate chamber under **extreme conditions** from -40 to +60 degrees and humidity from 45 % to 80 %.

Optimal heating distribution within all living spaces with Adria expertise engineering and integrated **Truma** hot air or **Alde** liquid central heating system (model dependent).



Made in Slovenia

Adria Mobil are committed to **sustainable development, preventing and reducing environmental impacts**, our environmental management system is certified to ISO14001. Our vehicles are manufactured at our state-of-the-art ISO 9001 EFQM 5 Star certified manufacturing facilities in Slovenia, using world-class manufacturing techniques for durability, reliability and premium quality.

'THE LARGEST, MOST MODERN RECREATIONAL VEHICLE MANUFACTURING FACILITIES UNDER ONE ROOF, IN EUROPE'.

Vehicles are supplied with a class-leading warranty, a comprehensive parts supply and aftersales service from our extensive Adria dealer network.

2_ Year Adria warranty

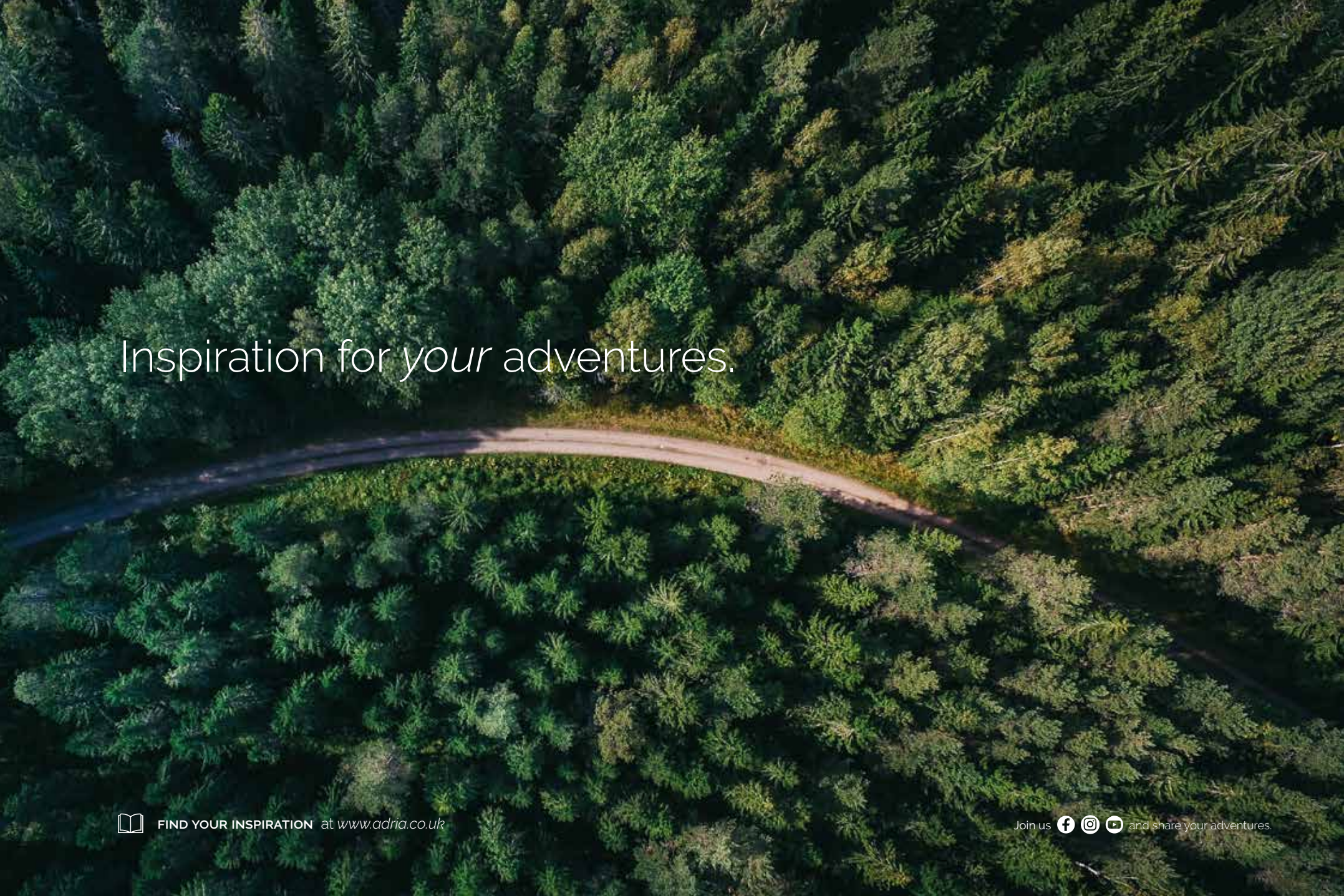
10_ Year* Adria Water Ingress warranty

*Terms and conditions apply see our website for details.



**I FEEL
SLOVENIA**

Slovenia
Your caravanning destination
www.slovenia.info

An aerial photograph of a dense forest with a winding road. The road is a light-colored, unpaved path that curves through the center of the image, separating two sections of the forest. The trees are mostly evergreens, with some deciduous trees showing yellow and orange autumn foliage. The lighting is bright, creating strong shadows and highlights on the foliage.

Inspiration for *your* adventures.



FIND YOUR INSPIRATION at www.adria.co.uk

Join us    and share your adventures.

**ADRIA CONCESSIONAIRES LTD.**

Drury drive
Sudbury
Suffolk
CO10 1WH

Email: team@adria.co.uk
Website: www.adria.co.uk

Printed and published: September 2023

Notices: The purpose of the catalogue is illustrative. Pictures inside the catalogue may include some elements not belonging to standard equipment or portray to products belonging to different markets. Products may change from technical or commercial points of view and in respect of regulations. Please contact your selected Adria dealer to obtain detailed information before purchasing.

Published by: Adria Mobil, d.o.o.; Art Direction: PM2; Production: Enigma d.o.o.; Photography: Branko Čeak, Jože Maček, Jure Horvat, Styling: Nataša Mandelj Čeak; Cover photo: Branko Čeak; Lifestyle photos: Francesco Zanet, Simone Benedetti, CJ Studio d.o.o., Shutterstock, iStock, themediumgray.com; Styling: PM2, Claudia Barberi. Renders: Inpac d.o.o.; Copy: Neil Morley; Lythography: Tomo Per; Thanks to: Müller, Amfibija, My Dream Journey, Mali raj; Printed by: Florjancič tisk d.o.o.