

A L P I N A

 ADRIA



**ADRIA**







# Inspiring your adventures.

OUR VISION IS FOR ADRIA TO  
BECOME THE MOST DESIRABLE  
RECREATIONAL VEHICLE BRAND.

ADRIA MOBIL HAS BEEN DESIGNING  
AND MANUFACTURING CARAVANS  
SINCE 1965, WITH OVER A HALF  
A CENTURY OF EXPERTISE AND  
PASSION APPLIED TO EVERY  
VEHICLE.

ADRIA IS RECOGNISED BY  
INDEPENDENT AWARDS FOR  
DESIGN, INNOVATION, QUALITY AND  
CUSTOMER SATISFACTION AND

OUR AIM IS TO INSPIRE YOU TO JOIN  
THE EVER-GROWING COMMUNITY OF  
ADRIA OWNERS, CREATING YOUR OWN  
MEMORABLE EXPERIENCES.

We design and develop our leisure  
vehicles by following these principles:

## DESIGN

We aim to inspire with vehicles  
*designed for living*, with great style,  
practical use of space, comfort and a  
feeling of well-being.

## INNOVATION

We are committed to innovation, with  
vehicles *designed to perform*, with  
everything developed for your comfort  
and enjoyment.

## EXPERIENCE

Our vehicles are *designed for you*, with  
a choice of models, layouts, features  
and a selection of soft furnishings.

**Adria. Inspiration for your adventures.**



# A L P I N A

THE NEW GENERATION ALPINA. OUR FLAGSHIP, LUXURY CARAVAN  
RANGE, FOR USE ALL YEAR ROUND.

FITTED WITH THE HIGHEST LEVEL OF SPECIFICATION, THE  
DISTINCTIVE ADRIA AERODYNAMIC SILHOUETTE, AN EXTRA-LARGE  
PANORAMIC WINDOW, SPACIOUS AND LUXURIOUS INTERIOR  
DESIGN.

Designed for all year round comfort.



The image shows the interior of a modern motorhome, likely an Adria Alping, during the night. The space is illuminated by warm, ambient lighting from the ceiling and a small table lamp. A large, L-shaped grey fabric sofa is the central feature, adorned with several colorful cushions in shades of teal, purple, and green. A patterned throw blanket is draped over one of the sofa's sections. In front of the sofa, a small white table holds two glasses of orange juice and a small plant. To the right, a kitchen area with light wood cabinetry and a black countertop is visible. On the counter, there are two glasses of red wine and a large glass bowl filled with fruit. The background features large windows with light-colored curtains, looking out onto a dark night landscape with silhouettes of trees. A large skylight in the ceiling provides a view of the starry night sky.

Experience  
with all your senses.

DESIGNED FOR LIVING

## DESIGNED FOR LIVING

Our caravans are carefully designed to give you a great experience when away from home, with home from home touches and spacious, elegant interior design.

Alpina has an elegant **home-style feeling**, with a blend of contemporary and classic design, offering a stylish and comfortable living space.

- | **ATRIUM-STYLE LIVING** WITH ITS EXTRA-LARGE PANORAMIC WINDOW
- | **SOUND SYSTEM** WITH BLUETOOTH® AMPLIFIER
- | **ADJUSTABLE TEMPERATURE CONTROL** WITH ALDE HEATING AND UNDERFLOOR HEATING
- | **ORGANISED STORAGE** THROUGHOUT











## DESIGNED FOR LIVING

Experience the **contemporary living spaces**.

The **living room** offers a great space to entertain featuring a comfortable sofa with elegant headrests and a light-weight folding table, for an easy additional bed set up.

| DINETTE WITH **COMFORTABLE SEATING** AND A DEDICATED TV STATION

| ELEGANT, ADJUSTABLE **HEADREST CUSHIONS**

## DESIGNED FOR LIVING

Stylish and practical **kitchen** complete with a durable worktop, integrated 3 burner hob and sink design, elegant concave cupboards, spacious drawers, oven/grill, large fridge, microwave and high-quality appliances.

Everything is in the right place to prepare your meals and for entertaining.

- | ELEGANT AND SPACIOUS **CONCAVE CUPBOARDS**
- | **LARGE WORKTOP** WITH A REAL WOOD CHOPPING BOARD
- | **THREE BURNER HOB** AND INTEGRATED SINK
- | **ORGANISED WORKSPACE** WITH PLENTY OF STORAGE
- | **HIGH-QUALITY APPLIANCES**



All UK caravans come with an additional kitchen worktop extension (excluding Action).



Master **bedrooms** available in twin and double arrangements, for a great night's sleep. Featuring easy to access beds and fitted with premium quality mattresses.

Adjustable mood lighting and clever storage for personal things.

- | **QUALITY SPRUNG BEDS** IN A CHOICE OF LAYOUTS
- | **PREMIUM QUALITY MATTRESSES**
- | **ELEGANT STORAGE** SOLUTIONS
- | **ADJUSTABLE AMBIENT LIGHTING**







DESIGNED FOR LIVING

Daily rituals are a pleasure, with a well-lit and ventilated bathroom, designed for space and comfort.

Elegant **bathroom** design maximises the space and features a shower, toilet and large wash basin, with clever lighting, mirror and storage.

| LARGE WASH BASIN AND MIRROR

| ALDE TOWER FOR WARMTH AND COMFORT

| STORAGE FOR PERSONAL THINGS

| ELEGANT LIGHTING TO CREATE THE PERFECT AMBIANCE



CARAVANS ADRIA

DESIGNED FOR LIVING

**Inspired solutions** throughout for a more comfortable and organised living space.

## Be comfortable

### LIGHTING

Versatile lighting, includes LED, spot lights and ambient lights.

### PREMIUM QUALITY MATTRESSES

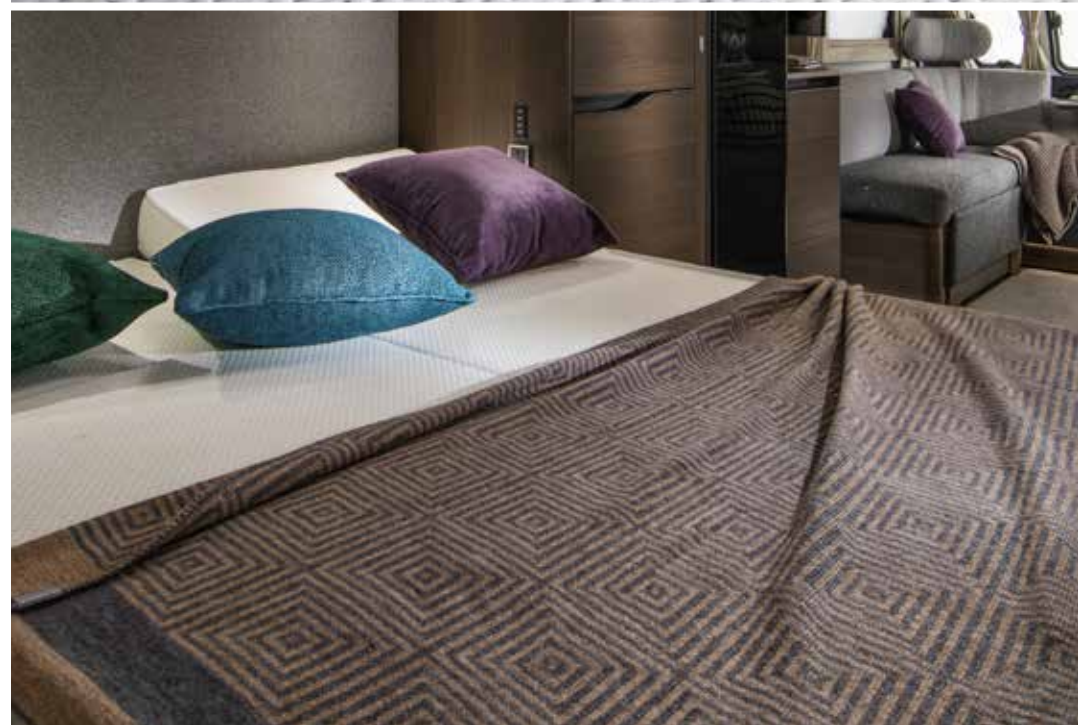
featuring Tencel® covers, provide great support with high-resistance foam construction, easy-care fabrics and natural protection against odours, bacteria and static.

### ORGANISATION

Beautifully organised storage with large cupboards, wardrobes and innovative solutions in all living spaces.

### SEATING

Relax with comfortable, supportive seating and headrests for extra comfort.







## Be in control

### **MULTIMEDIA**

Inspired solutions with an advanced easy-to-use digital control panel and a range of multimedia solutions including high-quality sound system with Bluetooth® amplifier and hidden speakers, TV bracket and multiple USB ports.





Performance and  
comfort all year round.

DESIGNED TO PERFORM



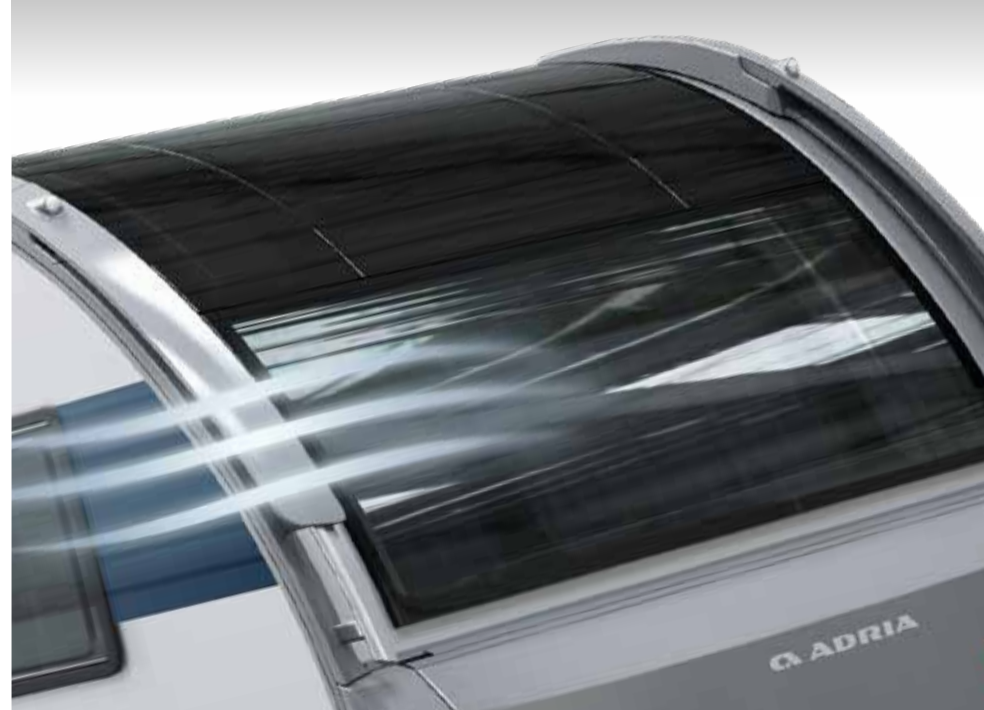
DESIGNED TO PERFORM

**Inspired design** vehicles for carefree enjoyment, practicality and comfort, Adria leads the way in caravan design.

Featuring aerodynamic profile and **Adria signature features**, for easier and more efficient towing.

- | **NEW GENERATION EXTERIOR** WITH AERODYNAMIC, ELEGANT DESIGN
- | **AIR-DIFFUSERS** ASSIST EASIER AND MORE EFFICIENT TOWING
- | **REAR WALL DESIGN** WITH FULL LED MULTIFUNCTIONAL LIGHTS
- | **PERFORMANCE CHASSIS** WITH AKS STABILISER AND ATC CONTROL
- | **PANORAMIC WINDOW** TO MAXIMISE NATURAL LIGHT, GAS ASSISTED OPENING
- | **AKS STABILISER**
- | **WIDE ENTRANCE DOOR** AND DOUBLE-GLAZED FLAT WINDOWS
- | **METAL GRAB HANDLES** FOR EASY MANOEUVRING
- | **SPACIOUS STORAGE** THROUGHOUT
- | **LED SILHOUETTE AWNING LIGHT** AS STANDARD
- | **ADRIA ALLOY WHEELS** WITH CONTINENTAL® TYRES

\*Some features are range specific. Please check with your supplying dealership.



Your style,  
your choice.

DETAILS MAKE  
THE DIFFERENCE

A selection of **high-quality upholstery**  
**and cushion sets** to compliment the  
style and your personal taste.

UPHOLSTERY

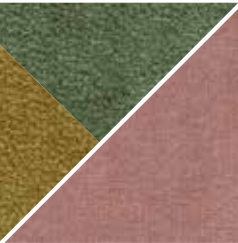


URBAN GREYS

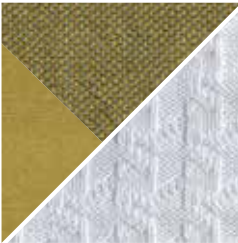


LEATHER CHARLES

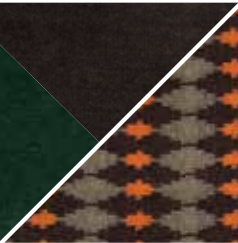
CUSHIONS



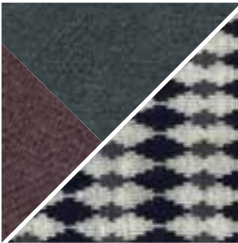
DREAM HARMONY



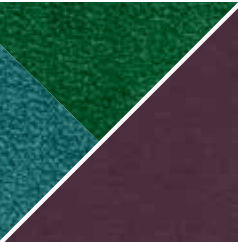
SUMMER VIBES



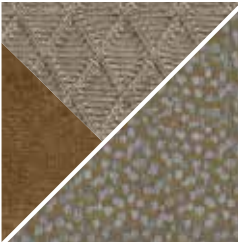
BROWNIES



GREY PLANET



MYSTIC GARDEN

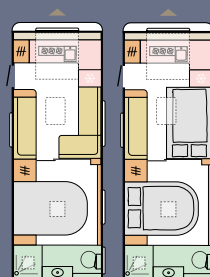


WARM BROWNS



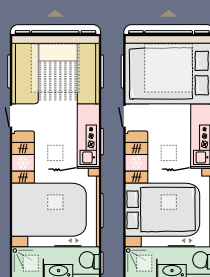
# Layouts

Available in a choice of layouts, there is sure to be one to suit you.



## RIO GRANDE

L	8297 mm
W	2460 mm
B	4



## MISSISSIPPI

L	8297 mm
W	2460 mm
B	4



## COLORADO

L	8260 mm
W	2460 mm
B	4



L = Length | W = Width | B = Berths

## Construction

Robust **body construction** and chassis integration for safer handling and optimum weight management, with **AL-KO and Knott** as our chassis partners (model and layout dependent). The combined solution of durable GFK body and performance chassis means reliable long-term performance.

With the clean lines and inspired solutions based on aerodynamic principles of our new generation caravans, experience improved air-flow and lower resistance when towing, for more efficiency.

Exclusively on Alpina caravans, Adria's unique **Complex body construction** combines the torsional strength of wood, the durability of polyurethane and the moisture-stopping properties of polyester giving reliable long-term durability and performance.



01 COMPOSITE WOOD PANEL

02 POLYURETHANE SEALANT

03 EPS STYROFOAM

04 DENT RESISTANT POLYESTER  
BODY SHELL

05 REINFORCED HARDWOOD PROFILE

06 XPS STYROFOAM INSULATION FOAM



# Climate-control

Built to **Adria Thermo-build** standards with advanced insulation materials and precision-engineered air-flow system to guarantee your comfort. Tested in our own climate chamber under **extreme conditions** from -40 to +60 degrees and humidity from 45 % to 80 %.

**Optimal heating distribution** within all living spaces with Adria expertise engineering and integrated **Truma** hot air or **Alde** liquid central heating system (model dependent).



# Made in Slovenia

Adria Mobil are committed to **sustainable development, preventing and reducing environmental impacts**, our environmental management system is certified to ISO14001. Our vehicles are manufactured at our state-of-the-art ISO 9001 EFQM 5 Star certified manufacturing facilities in Slovenia, using world-class manufacturing techniques for durability, reliability and premium quality.

**'THE LARGEST, MOST MODERN RECREATIONAL VEHICLE MANUFACTURING FACILITIES UNDER ONE ROOF, IN EUROPE'.**

Vehicles are supplied with a class-leading warranty, a comprehensive parts supply and aftersales service from our extensive Adria dealer network.

**2\_** Year Adria warranty

**10\_** Year\* Adria Water Ingress warranty

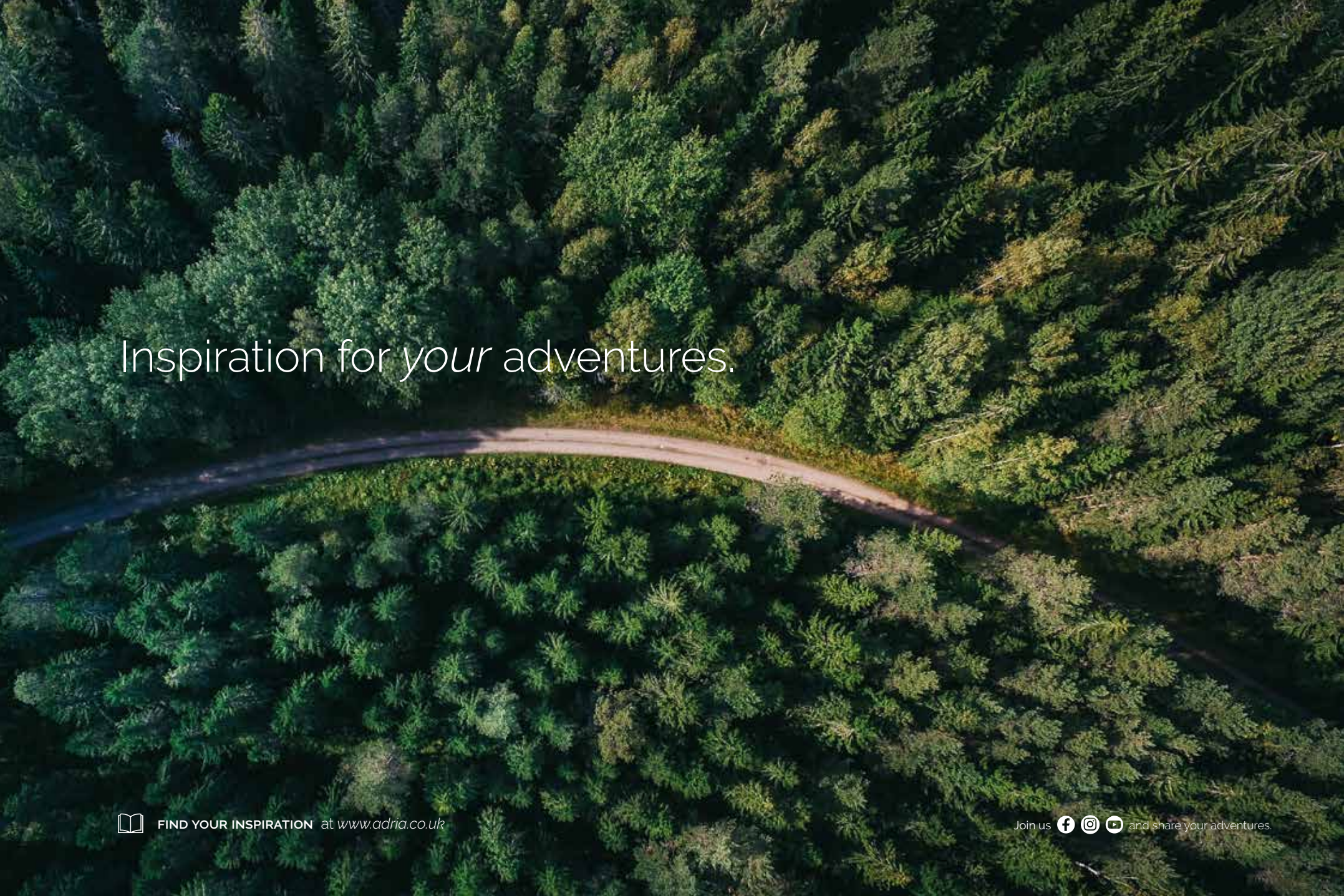
\*Terms and conditions apply see our website for details.



**I FEEL  
SLOVENIA**

**Slovenia**  
Your caravanning destination  
[www.slovenia.info](http://www.slovenia.info)




An aerial photograph of a dense forest with a winding road. The road is a light-colored, unpaved path that curves through the center of the image, separating two sections of the forest. The trees are mostly evergreens, with some deciduous trees showing yellow and orange foliage. The lighting is bright, creating strong shadows and highlights on the foliage.

Inspiration for *your* adventures.



FIND YOUR INSPIRATION at [www.adria.co.uk](http://www.adria.co.uk)

Join us    and share your adventures.



**ADRIA CONCESSIONAIRES LTD.**

Drury drive  
Sudbury  
Suffolk  
CO10 1WH

Email: [team@adria.co.uk](mailto:team@adria.co.uk)  
Website: [www.adria.co.uk](http://www.adria.co.uk)

Printed and published: September 2023

**Notices:** The purpose of the catalogue is illustrative. Pictures inside the catalogue may include some elements not belonging to standard equipment or portray to products belonging to different markets. Products may change from technical or commercial points of view and in respect of regulations. Please contact your selected Adria dealer to obtain detailed information before purchasing.

Published by: Adria Mobil, d.o.o.; Art Direction: PM2; Production: Enigma d.o.o.; Photography: Branko Čeak, Jože Maček, Jure Horvat, Styling: Nataša Mandelj Čeak; Cover photo: Branko Čeak; Lifestyle photos: Francesco Zanet, Simone Benedetti, CJ Studio d.o.o., Shutterstock, iStock, themediumgray.com; Styling: PM2, Claudia Barberi. Renders: Inpac d.o.o.; Copy: Neil Morley; Lythography: Tomo Per; Thanks to: Müller, Amfibija, My Dream Journey, Mali raj; Printed by: Florjancič tisk d.o.o.